

Code of practice for pneumatic waste conveyance system

AMENDMENT NO. 1

July 2020

1. Page 13, 4.2.2

Amend the first sentence to “The relevant QP shall:”

2. Page 17, Figure 2

Replace Figure 2 with the following:

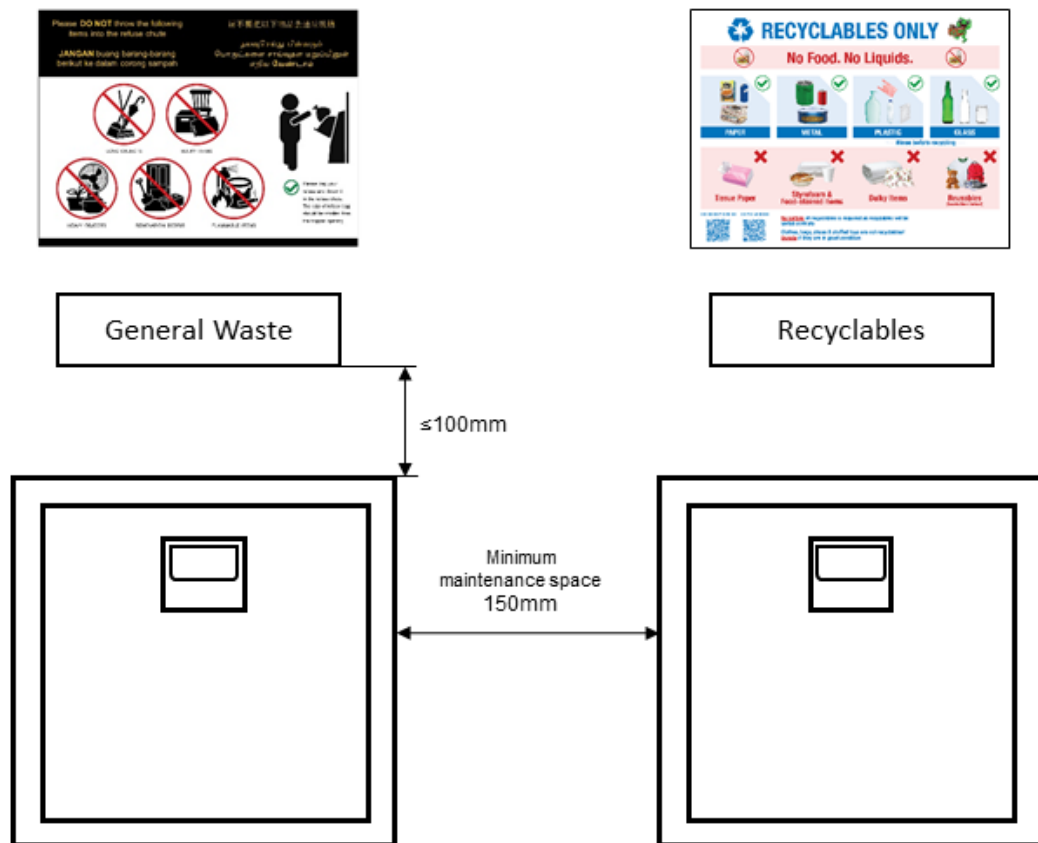


Figure 2 – An example of label positions for typical refuse hoppers

3. Page 18, Figure 4,

Replace Figure 4 and its Notes with the following:



Image courtesy of the National Environment Agency

Figure 4 – Signage for recyclables

4. Page 22, 5.7.2.3

Replace the second sentence with the following:

Example of the location of noise measurement is shown in Figure 6. If this method of measurement is not feasible, the noise measurement can be made 1 m from the noise source and extrapolated to the nearest residential block.

5. Page 29, 6.2.2.1

Add “or ASME BPVC Section IX” in the first sentence after “API 1104”.

6. Page 32, 6.5.2.5 a)

Replace the clause with the following:

- a) For an inspection chamber equal to or more than 2 m deep, clear access opening shall be at least 800 mm by 800 mm; and

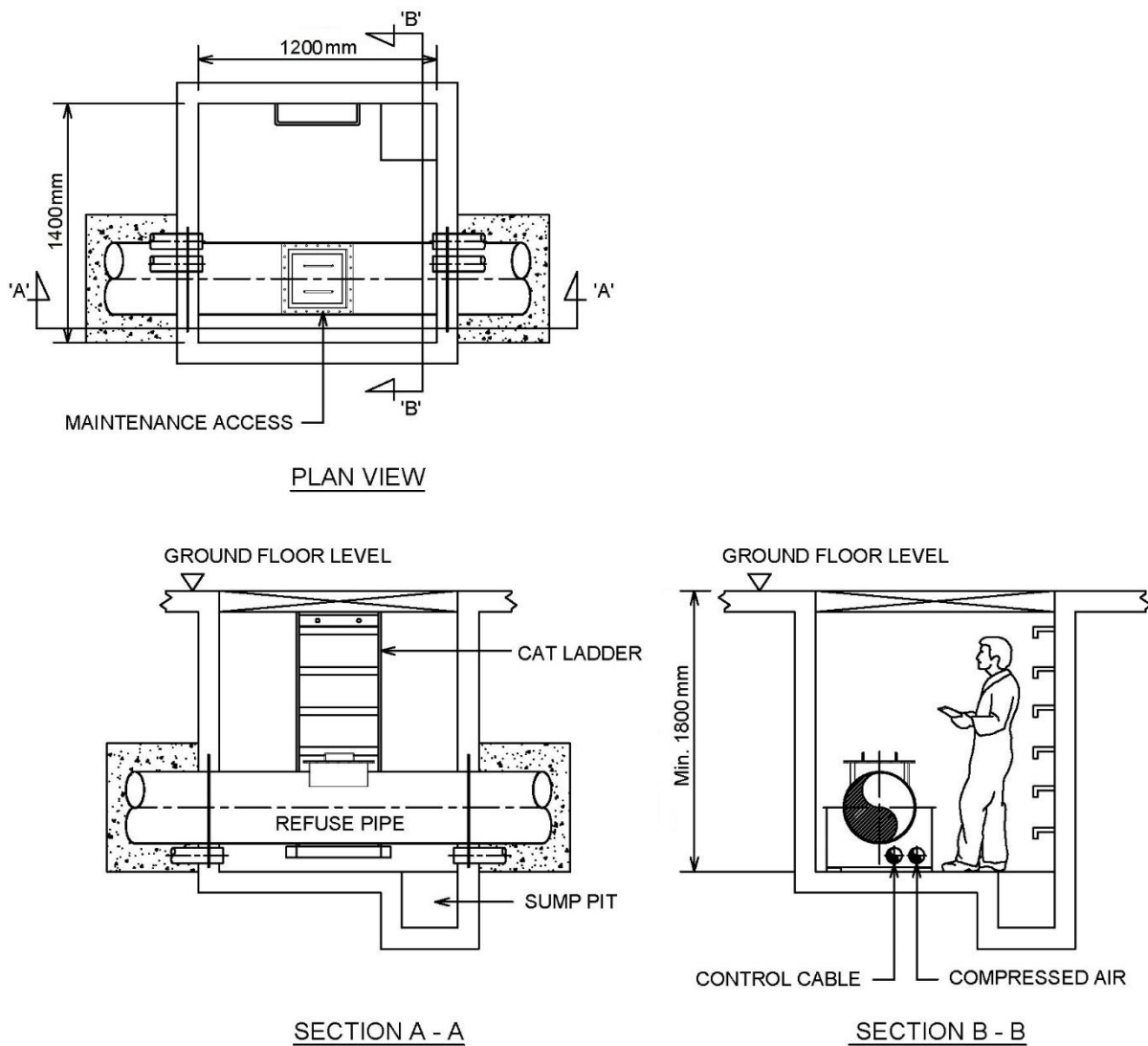
7. Page 32, 6.5.2.9

Add the following new clause:

6.5.2.9 For an inspection chamber deeper than 6m, it shall have an intermediate platform. To accommodate the intermediate platform, the inspection chamber internal dimensions shall be at least 1800 mm by 1800 mm (see Figure 10).

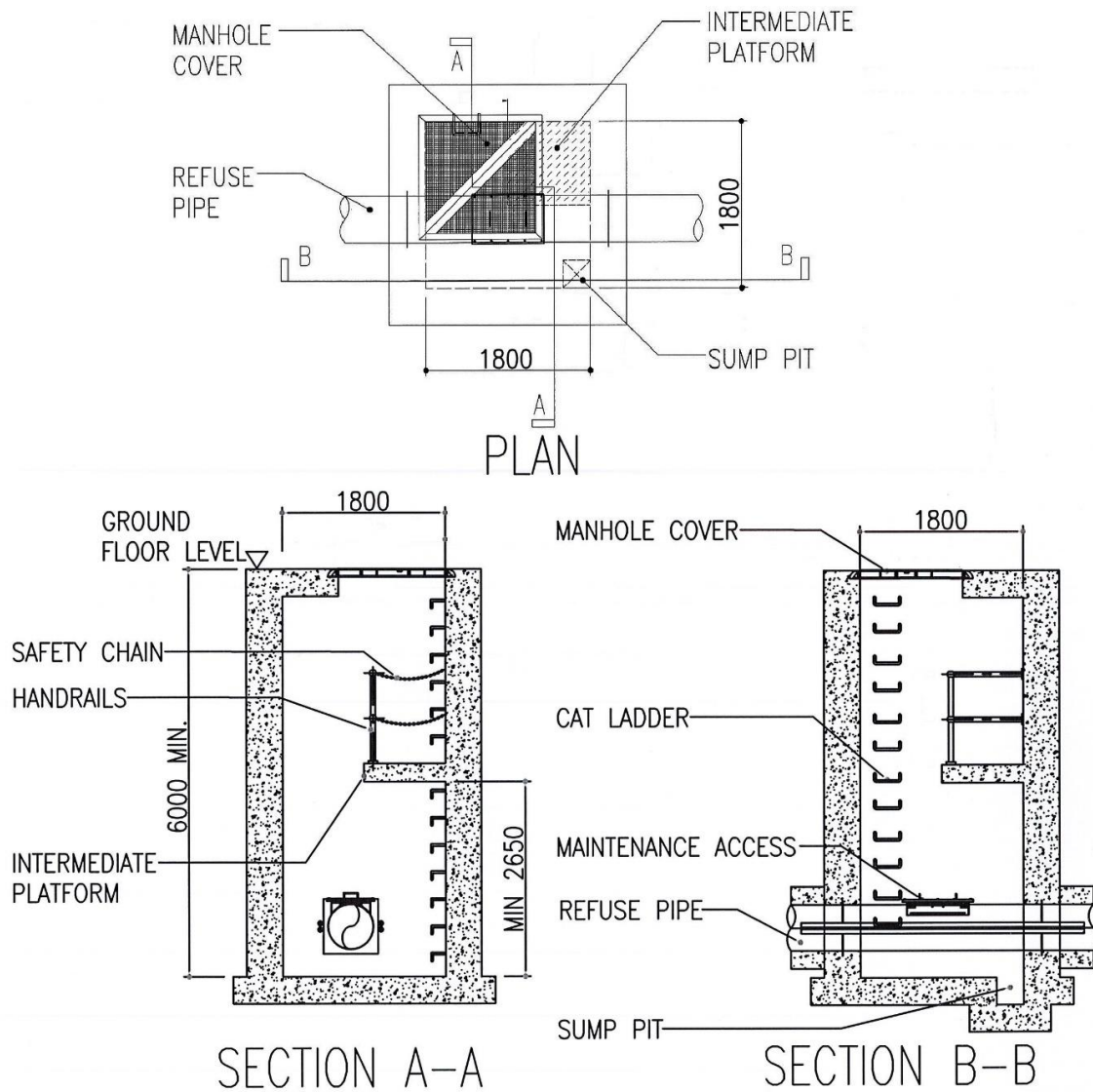
8. Page 33, Figure 10

Replace Figure 10 with the diagram below.



(a) Inspection chamber of less than 6 m depth

Singapore Standard SS 642 : 2019
Amendment No. 1



A proper fall-arrest system shall be used to prevent fall on manhole steps. Site-specific emergency rescue plan shall be developed for all confined space manhole rescue.

(b) Inspection chamber equal to or more than 6 m depth

Figure 10 – Examples of inspection chamber layout

9. Page 36, 7.1.5

Add the following after the third sentence:

If this method of measurement is not feasible, the noise measurement can be made 1 m from the noise source and extrapolated to the nearest residential block.

10. Page 39, 7.8.2.1

Replace "IE2" with "IE3".