

arc

PAM
NORTHERN CHAPTER



PAM
NORTHERN
CHAPTER

REJUVENATION

01 2021

SIA BOEY
GUDANG

BACKLANE PROJECTS
CHOWRASTA BUS STOP

FREE DIGITAL COPY FOR PAM MEMBERS ONLY

CHAIRMAN'S SPEECH



I hope this message finds everyone safe and healthy.

ON arC

It is an absolute pleasure to welcome you to the inaugural issue of arC this January 2021. We are happy to announce this new e-publication, which is purposely designed for and published by PAM Northern Chapter's (PAM NC) members.

ArC is a publishing platform for PAM NC members to share their design ideas, philosophies, and project creativity, particularly on the innovation of building and green technologies. ArC also serves as a newsletter to update members on local authorities' rules and regulations, as well as the events and activities organised by our Chapter.

To this end, PAM NC has formed an editorial team led by Ar. Leow Kwong Choon, PAM NC's Honorary Secretary, for the e-publication of arC. I would like to extend my heartfelt appreciation and thanks to the arC Editorial Team - especially our younger members - for their commitment, hard work, and contribution towards arC's successful launch.

2019 IN REVIEW

In August 2019, PAM NC was appointed by the Penang State Government as the competition organiser of the Penang South Island (PSI) International Master Plan Design Competition. The competition was launched in November 2019. We received an overwhelming response of 124 submissions from 26 countries, including Malaysia. Five consortium teams were selected to submit their master plan proposals in January 2020. On 19 August 2020, the State Government announced Bjarke Ingels Group (BIG) and Hijjas Architects and Planners as the joint PSI Lead Master Plan Designer with their proposal titled 'BiodiverCity Penang'.

On 13 October 2019, PAM NC successfully organised the 5th PAM Council Meeting at PAM NC's Office in Penang, in conjunction with the PAM Gold Medal's address by Prof. Ar. Laurence Loh at Cheong Fatt Tze Mansion, Penang.

On 26 October 2019, we organised World Architecture Day (WAD) 2019: 'Architecture... Housing for All' and the Bus Stop Rejuvenation Competition at Chowrasta Market. Both events were successfully executed with full commitment from all team members. The WAD team also produced a wonderful video on Penang's first public housing project – the Rifle Range Flats in Air Itam – which has been uploaded to YouTube. Syabas!

2020 IN REVIEW

2020 has been an unpredictable ride with the pandemic and various difficulties that made life quite hard for

When the pandemic hit in March 2020, most of our scheduled activities, seminars, events and Annual General Meetings (AGMs) were rescheduled or cancelled. During the Movement Control Orders (MCO) and Conditional Movement Control Orders (CMCOs), PAM NC assisted MBPP and MBSP in disseminating rules related to COVID-19 to members, especially those pertaining to the role of the Principle Submitting Person (PSP), in order to facilitate the compliance of the COVID-19 Standard Operating Procedures for construction works. We also collected and submitted the required data to the relevant Local Authorities for pandemic monitoring. PAM NC had been invited to participate in online meetings such as OSC, SPEAD and TRP with Local Authorities throughout the MCO and CMCOs.

Our Secretariat was kept busy circulating instructions and notes from various Local Authorities and agencies to all members. Thank you to our two Secretariat members.

We held our PAM NC 48th AGM on 25 July 2020 at Urban H Hotel, during which our office bearer and committee members for the Year 2020/2021 were elected.

2021 LOOKING AHEAD

In 2021, let us all be positive and cheerful with shining spirits and aspirations for the future. We should vow to not let the negative affect us when looking forward to the future. We should also work hard to achieve our dreams and ambitions. So, let us all embrace the new year with much-needed hope and happiness.

PAM Centre

PAM NC, together with PAM Centre, will continue to look for innovative ways to serve our members in our new normal through the adoption of technology. PAM has invited all Chapters to join various Sub-Committees and CPD seminars at Council level.

Graduate and Student Membership

PAM NC would like to reach out to graduate architects and architecture students in the Northern region to join our association. As a start, we have incorporated a special segment showcasing students' works in arC. We welcome any suggestions for programmes and activities from graduates and students.

The PAM NC Committee has appointed Mr. Noor Afandi (an academician) and Ms. Irene Aw Siew Bee (a graduate architect) as Non-Corporate Members to our Committee for the Year 2020/2021. We appeal to younger members to step up and join us in making our architecture community stronger!

New Premises for PAM NC

In a recent PAM Council Meeting, PAM NC tabled a proposal for a new premises with a more conducive space for functions and events. We would like to seek your feedback on your expectations for the future premises – a co-working space? Something else? Feel free to forward your feedback to our Secretariat.

Serving Members

Members of PAM NC comprise Corporate, Graduate, and Student members from Penang, Kedah and Perlis. Therefore, we would like to appeal to members in Kedah and Perlis to participate in our activities as well. We are considering to appoint a representative based in Kedah in order to get connected with members and Local Authorities there.

Cooperating with Authorities and Professional Bodies

We will work together in contributing and suggesting ideas towards the formulation of guidelines at the Local Authority level, such as MBPP, MBSP, and Bomba.

Lastly, I would like to express my deep appreciation to the Office Bearers, Committee and Sub-Committee who have contributed time and effort to PAM NC. Together, we can make the change.

Happy New Year 2021 and Stay Safe.



Ar. TPr. Lee Siew Ang
PAM NC Chairman 2020/2021

EDITOR'S NOTE



Greetings. A very Happy New Year to all. The year 2020 has been a challenging one for most. However, let's look forward with optimism to the future. I believe that our profession is resilient and will recover with renewed enthusiasm during 2021 and beyond.

PAM Northern chapter will always be at the forefront, working with the relevant authorities, professional bodies and other construction related institutions, to keep our members abreast of any developments or relevant information related to the architectural profession.

PAM NC has started an E publication called 'arC'. The title represents the PAM Northern Chapter Architectural Community, that includes the states in the northern region. The e publication is the brain child of our current PAM NC chairman Ar. Lee Siew Ang.

The publication is formatted into 4 sections namely; Architecture, Innovation, Events and Red Tape.

In this inaugural issue, we have chosen the theme "REJUNVENATION".

The projects in this edition highlight the potential of breathing new life into once neglected buildings and spaces. Those that may have been considered lost forever, are given a new life in the contemporary context and yet continue to retain a deep sense of their historical past. Linking our past with the present and hopefully into the future.

The **Sia Boey urban park**, an existing long abandoned site, is transformed and given a new lease of life and is now very much a positive part of the city.

The **Gudang project**, an existing godown, is adapted and revitalized for a new and exciting purpose.

The newly designed **Chowrasta Bus Stop** on Jalan Penang, utilises the idea of a coach from a tram, evoking memories of this mode of transport traversing the streets of Penang in the days gone by.

Back lanes have always been utilitarian spaces for access to services and are usually neglected in the design process. Working with the relevant authorities, the back lanes have now been revitalized into intimate pocket gardens for the public's enjoyment. One such pocket is the **Church Street/Penang Street Revitalization project**.

I would like to thank the e publication team who have worked tirelessly and enthusiastically to produce the first edition of arC.

Please Enjoy!

KCL
Ar. KC Leow
Editor

CONTENT

/ ARCHITECTURE /

1

SIA BOEY

URBAN ARCHEAOLOGICAL PARK



4

BACK LANE REVITALISATION

EVERY BACK LANE HAS THEIR PLACE
IDENTITY.....



6

GUDANG CAFE

APPRECIATE THE PAST



8

CHOWRASTA BUS STOP

GET A 'TICKET' TO RELIEVE A MOMENT
LOST IN TIME



10

STUDENT'S COLUMN

/ INNOVATION /

12

BANGKU TAPAU

AN UBIQUITIOUS PLASTIC STOOL



13

SHILL 90'S

CREATIVITY ON A BUDGET



17

KERAJAAN NEGERI PULAU PINANG

MAJLIS BANDARAYA PULAU PINANG (MBPP)

MAJLIS BANDARAYA SEBERANG PERAI (MBSP)

CIDB MALAYSIA

/ EVENTS /

18

WORLD ARCHITECTURE DAY

WAD 2019



19

PAM NORTHERN CHAPTER HALF DAY SEMINAR

GBI INCENTIVES AND ROOF-U VALUE CALCULATION



20

A DATE WITH MAYOR

YBHG. DATO' AR. YEW TUNG
SEANG



SIA BOEY

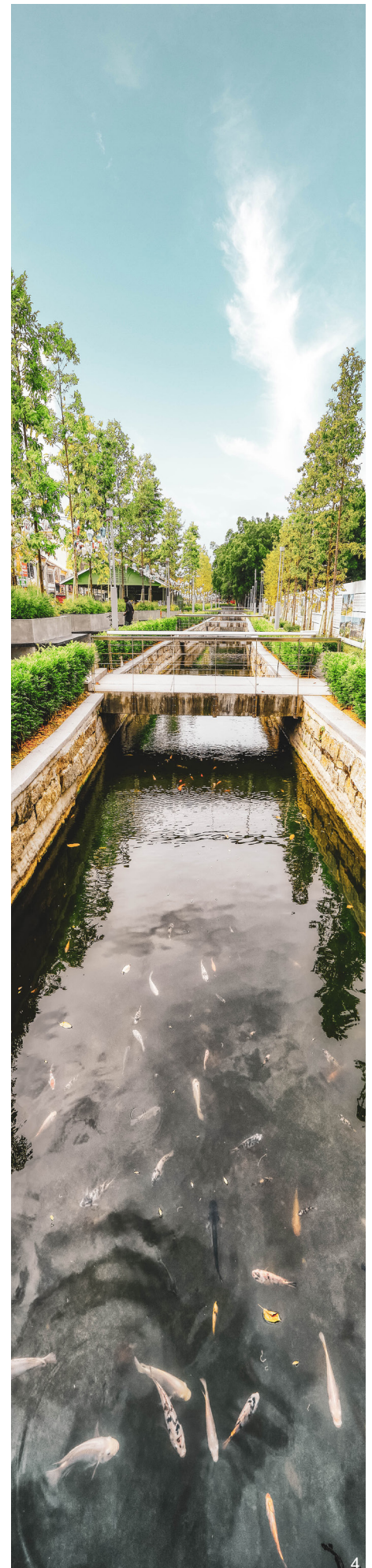
GEORGE TOWN | PENANG

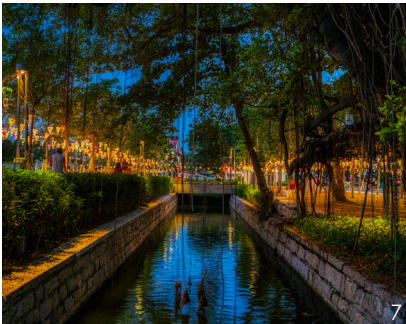
Sia Boey Urban Archaeological Park stands in stark contrast to the towering and imposing city blocks that surround it, on the fringe of the George Town World Heritage site. Sia Boey, of Hokkien origin (or Ujong Pasir in Malay), literally translates to 'end of the village'.

1. & 2. First erected in the late 1800s, the Sia Boey Market is the last remaining market structure from its era in Penang.
3. Situated within the centre of Penang's historic capital, Sia Boey Urban Archaeological Park stands in stark contrast to the towering and imposing city blocks that surround it.
4. The restored Prangin Canal is now teeming with koi and tilapia fish, creating a contained urban ecosystem.
5. The park features a colourful variety of creative play structures.
6. The historical market structure has been faithfully renewed and has been host to a number of lively public activities.
7. The existing natural features of the site were preserved, lending its beautiful character only attainable with time.



Now a thriving urban park, Sia Boey boasts natural features scarcely seen in George Town. Perhaps its most notable feature is the Prangin Canal, once an important waterway for 'tongkang' and 'perahu' to transport goods inland. Today, the canal serves as the spine of the entire scheme after extensive excavation and preservation of its granite embankments. People are often seen stopping on two newly-built bridges to stand over the water and admire the aquatic life swimming beneath.





The park also preserves an important architectural feature: the structure of the late 19th-century Sia Boey Market, the last of its kind in Penang. Identifiable through its cast iron posts and wooden louvres, the building remains fundamentally the same except with the addition of brick-laden seating and planters around its perimeter. Once a busy market, housing dozens of permanent stalls, the long-abandoned space is now an airy, blank canvas for public exhibitions, seminars, and recreational activities.

In time, the dilapidated row of pre-war shophouses that flank Sia Boey Archaeological Park will be restored, reversing the major deterioration that occurred since its abandonment in the early 2000s. Future development hints at a potential integration with an LRT line and an introduction of new businesses to the park, effectively continuing Sia Boey's legacy as a significant socio-cultural site in the city, fit for the new generation.

Client

Perbadanan Pembangunan Pulau Pinang

Lead Architect

Ar. Tpr Michael Ong Chin Keong
Ms. Teo Kooi Pei
Ms. Ang Shi Wen

Architecture Firm

BYG Architecture Sdn. Bhd.
www.bygggroup.com

Contractor

Yuan Seng Building Trading Sdn. Bhd.

C&S Engineer

Perunding YAA Sdn. Bhd.

M&E Engineer

GH Tag Consultancy

Quantity Surveyor

SG Contract Services Sdn. Bhd.

Landscaping

Green Acres Studio Sdn. Bhd.



In the effort of restoring and reviving the historical landmark, Sia Boey Urban Archaeological Park Phase 1 received an honorary mention.



8. With two of its three renewal phases completed, Sia Boey is already making a positive impact on Georgetown's dense cityscape.

BACK LANE REVITALISATION

CHURCH STREET - PENANG STREET



1. The Penang Island City Council (MBPP) initiated the Church Street-Penang Street Back Lane Revitalisation Project to breathe life into George Town's under-utilised back lanes.

'Every back lane has their 'place identity...,'

*"...find ways to **contribute to its identity** instead of taking away from it"*



LEGEND
1. ENTRANCE AND SIGNAGE
2. SCULPTURE
3. BENCHES
4. POCKET PARK
5. SHOP HOUSES

LOCAL SETTINGS

Public spaces play an essential role in urban development as a vehicle for social integration. However, the translation of a common public need is challenging due to the need for a consensus among everyone involved; hence, MBPP conducted a series of public consultations to ensure everyone's voice is heard.

MBPP gleaned valuable ideas on sprucing up the back lanes that way, resulting in a customised solution that involves upgrading works with positive social and economic impacts.

3. Benches and landscapes are arranged in diagonal axis and blend nicely with the paving pattern.
4. Benches are designed in mind to void existence of 'unwanted people and activities' and to keep the community safer.
- 5 & 6. Existing social and culture activities are remained.
7. Public votes for safety features in back lanes.

SITE CONSTRAINTS

As the back lane is surrounded by residential units, any design intervention has to be sensitive, with minimal breaches of privacy. The proposed 'Quiet Park' is designed for quiescence, without any facilities for noisy activities to preserve peace.



DESIGN IDEA

The visual insignificance of back lane from the main road was overcome through the use of multiple design cues that draw visitors in: prominent signages, arrow-patterned pathways and sculptures act as wayfinding devices that lead visitors to a hidden pocket park from the main road. Trees provide much-needed shade while visitors rest and converse on benches, the only activity encouraged there.

Ultimately, the Back Lane Revitalisation Project hopes to ignite conversation about the potential of back lanes as useful spaces beyond their utilitarian nature.

Completion Year
Jan 2020

Client, Quantity Surveyor, Collaborators
Majlis Bandaraya Pulau Pinang

Lead Architect
Ar Loh Mei Ee

Architecture Firm, Landscaping
Mei Ee Architect
www.meiee-architect.com

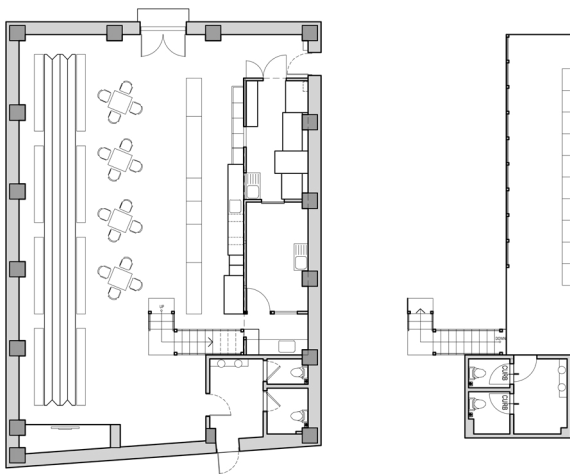
Design Team
Ar Loh Mei Ee, Ahnaf bin Samsury,
Nurardini Raihana Binti Rosmadi

Contractor
Nfaz Enterprise

Photographers
Ar. Loh Mei Ee, Ken Yeoh,
Nurardini Raihana Binti Rosmadi,
Law Kah Kuang

GUDANG CAFÉ

GEORGE TOWN | PENANG



Impermanence is the only constant in the passage of time, something which Gudang Cafe chose to embrace.

Behind its crusty facade and rusted steel doors, the former warehouse - “gudang” in Malay - has been transformed into a quaint, open-plan cafe that intentionally reveals tell-tale signs of age: discoloured walls, steel trusses and corrugated roof sheets are complemented by a combination of rustic and natural materials throughout its interior.

Gudang Cafe is envisioned as a perpetual work-in-progress, in which all its interior elements can be adapted to new configurations and purposes to suit the needs of the community.

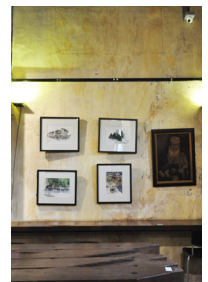
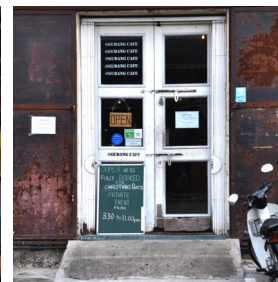
APPRECIATE THE PAST

We appreciate architecture intuitively, whether or not we were trained to notice it. Gudang Cafe intentionally preserves and exhibits much of the existing elements of the warehouse to allow the public to appreciate this record of the past while enjoying its new function as a cafe.



MATERIALS

Through adaptive reuse, Gudang Cafe breathes new life into traditional objects that were left behind in the old abandoned warehouse. Industrially-inspired furniture design complements its raw and unfinished look.

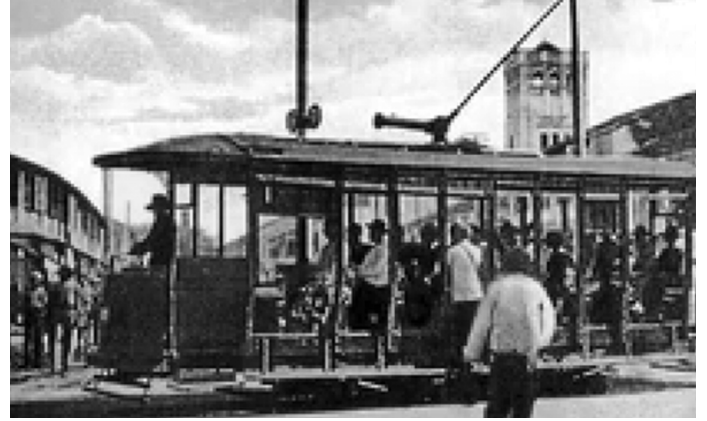


LIFESTYLE HUB

Gudang Cafe is envisioned as a lifestyle hub for the latest trends in town. It is, by nature, democratic: impermanent elements create a fluid space that the community can develop themselves to enjoy their own culture.

CHOWRASTA BUS STOP

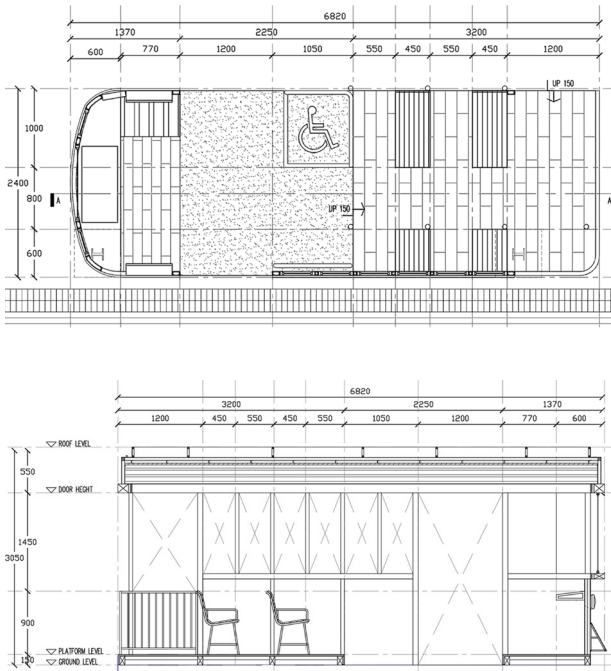
GEORGE TOWN | PENANG



There's a story behind the curious discoloured strip that runs along Penang Road today: long ago, it was a pair of metal tracks that guided the humble tram, Penang's main mode of transportation before the proliferation of the automobile. Back then, Chowrasta Market, as the first market in the heart of George Town, was a popular and lively destination. The design of the Chowrasta Bus Stop pays homage to these two icons. The recently-restored Chowrasta Market was fitted with a bus stop that looks like a tram in tribute to its importance in connecting and collecting people in 19th-century Penang.



Get a **'ticket'** to relive a moment lost in time.



Bee Architect was founded in 2016 by Ar. Bee Sui Yeng. He believes that architectural design should enhance the identity of a building in green and sustainable ways. Each design is not merely a means to an end, but rather an opportunity to create sustainable value for the environment and its context.



Location
Chowrasta Market, Penang Road

Completion Year
2019

Client
Majlis Bandaraya Pulau Pinang (MBPP)

Lead Architect / Design & Project Team
Ar Bee Sui Yeng, Ng Yong Kang & Lim Zhi Jing

Architecture Firm
Bee Architect

Photographer
Lim Zhi Jing

Contractor
Shen Yang Construction & Engineering

C&S Engineer
Perunding YAA Sdn Bhd

YOUTH & COMMUNITY DEVELOPMENT CENTER

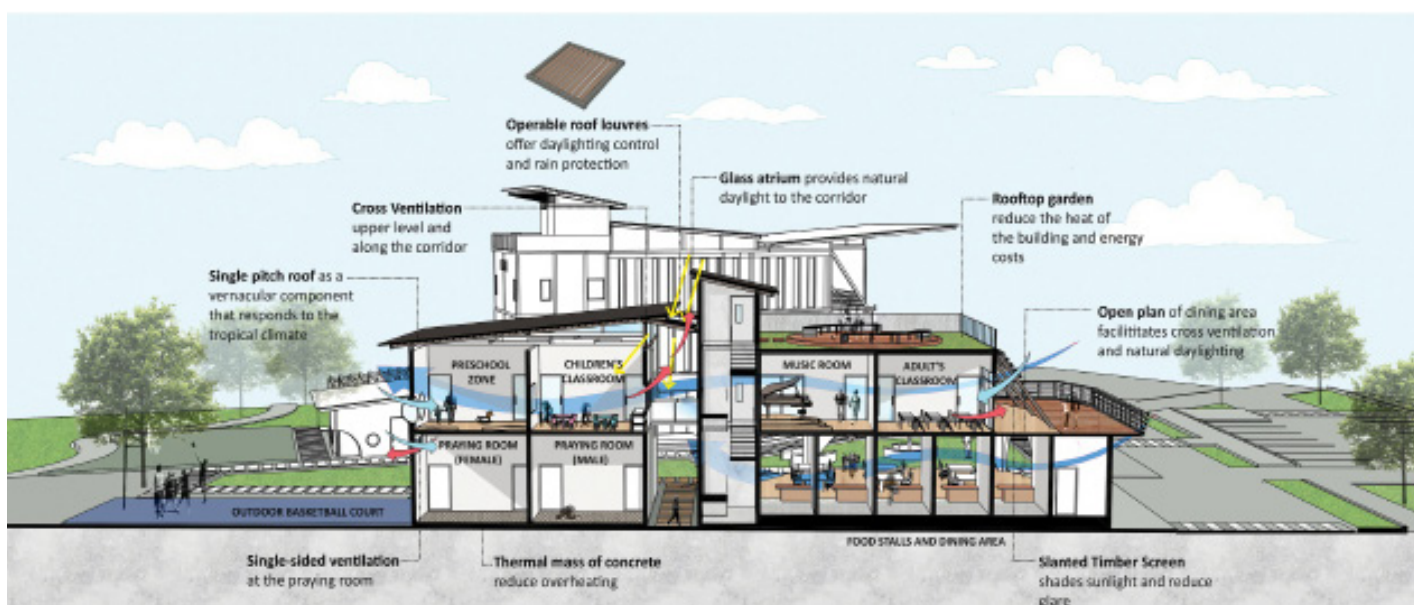
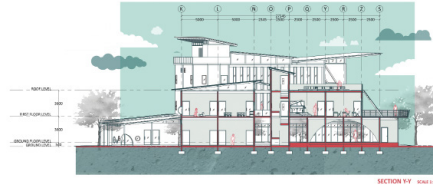
LIM MING EN

YEAR 3 SCHOOL OF HOUSING BUILDING
AND PLANNING (USM)
STUDIO MASTER : DR. AZHAR

***"We build too many walls
but too few bridges."***

BRIDGING CONNECTION

As technology and society advance, the disparity between the old and the young grow wider, leading to a phenomenon known as the inter-generational gap. The Youth & Community Development Centre, a 3-storey structure in Gelugor, Penang aims to bridge this gap by fostering interaction and understanding between the old and the young. All entrances lead toward a central axis - a Green Corridor - which dominates the building and serves as a common space where culture, recreation, and interaction can occur for both generations.



PENANG STATE ART GALLERY

SNOW CHONG XUE YING

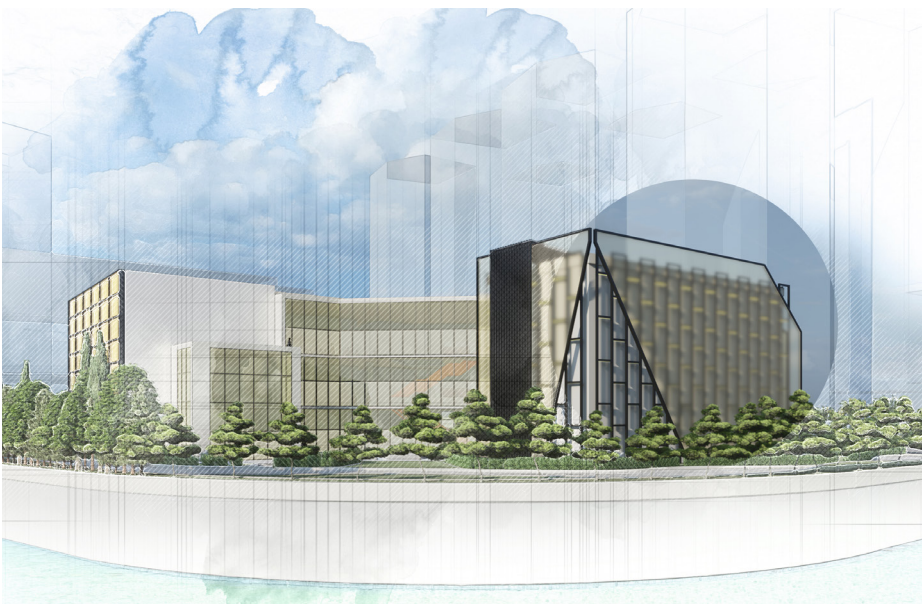
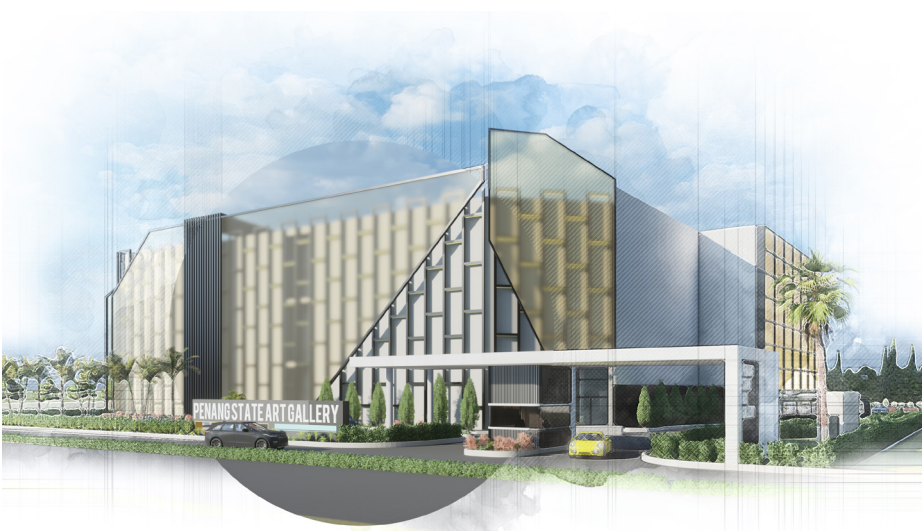
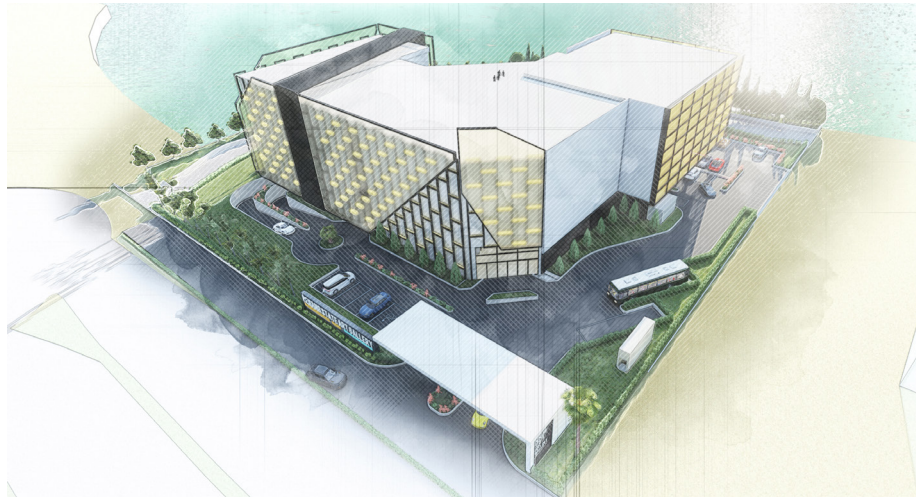
YEAR 4 SCHOOL OF HOUSING BUILDING

AND PLANNING (USM)

STUDIO MASTER : PROF.DR AHMAD

SANUSI HASSAN

“Architecture symbolises life, which comprises experiential elements; by fusing arts and purpose, architecture becomes more meaningful.”



The Penang State Art Gallery is designed to correlate and enhance the site and its surroundings using a trifecta of function, technology and architecture. A smart glass facade creates an aesthetically-pleasing yet functional 'skin' that is also interactive with its external environs. At the same time, the facade protects exhibited art pieces by controlling the amount of daylight that penetrates the building without compromising the view of the sea. This element is carried into the building to create patterns and shapes that reflect both modern and heritage values. Once inside, a feature staircase acts as the primary vertical axis and wayfinding device to every exhibition space in the building.

**PENANG STATE
ART GALLERY**

PROJECT LOCATION: PENANG STATE ART GALLERY, PENANG, MALAYSIA
DATE: 2023
DRAWN BY: SNOW CHONG XUE YING

Bangku which means 'stool' in the Malay language, and 'Tapau'; a local slang word meaning 'to take away', is a common term used when one is buying take away food from stalls. Hence we thought it would be fitting that the stool be made out of recycled plastic waste, a material commonly found in abundance at recycling centers or collected from domestic usage. Highlighting the role and the open-ended possibilities that a circular design-based economy can have in a country such as Malaysia.



BANGKU TAPAU

AN UBIQUITOUS PLASTIC STOOL

<https://notoscale.com/portfolio/bangku-tapau/>

In an effort to highlight recycling efforts in Malaysia, no-to-scale* picks up on one of the most pressing issues of today; that of plastic waste. Malaysia's recycling program, which is still in its infancy, is inefficient and requires active participation by the locals to make the program successful. Utilizing the model of the circular economy, no-to-scale* proposed a stool that can be entirely self-made from recycling domestic, plastic waste. Demonstrating to the public the possibility of harnessing waste in a more productive manner. What better way to communicate this than through the humble plastic stool ?

'Bangku Tapau' is inspired by the ubiquitous plastic stools commonly found in hawker and 'mamak' stalls. Durable, utilitarian and copied endlessly, it is a true testament of a great design. Inspired by this humble piece of furniture, no-to-scale studio proposes an upgrade to a local design classic.



SHILL 90'S

CREATIVITY ON A BUDGET



THE EXPERIENCE

Walking along Weld Quay, passers-by are drawn in by a quaint feature: a rough assemblage of old timber doors, windows, and siding panels mimic a decorative entrance gate, and the only way to go through is to go around it. Beyond the gate lies a garden-like space demarcated by plants and randomly-placed seating. Visitors are encouraged to meander through the waving greenery and discover new perspectives at every turn. All in all, Shill 90's delivers an affordable aesthetic that is also proudly environmental-friendly.

1. The upcoming open air café in town, still undergoing improvements.

Here you would find almost 80% materials that are repurposed from various sites or old buildings.

2. Old oil lamps from various old shop houses around Georgetown.

3. Mixture of old bricks (with plaster intact) from demolished buildings and left over bricks from various projects giving an interesting texture to the wall.
4. Timber planks used as platforms on scaffoldings as part of the ground patterns.
5. Door and window, timber siding and mailboxes from the shacks on the existing site.
6. Coconut husks from old mattress. Strips of old polycarbonate roofing formed the edges to hold the husks.
6. Coconut husks from old mattress. Strips of old polycarbonate roofing formed the edges to hold the husks.
7. Broken parasol + broken scaffolding parts = new parasol
8. Semi mobile stalls with wheels. Heavy duty conveyor belts from quarries lined the roof for water tightness. Metal sheets from site hoarding form the envelope of the stalls.





THE SITES

Shill 90's is an intriguing hodgepodge of salvaged items. Almost 80% of its materials were sourced from various sites, refurbishment projects, illegal dump sites, and existing site structures, then recycled, repurposed, or repaired to suit the needs of its users.

CREATIVITY IN TOUGH TIMES

Shill 90's is all about creativity on a budget. As a new open-air hangout space responding to Covid-19 precautionary measures, everything about it had to be made fast, temporary and cheap for young stall operators to rebuild their businesses post-MCO, upon the permanent closure of their original premises. Recycling and repurposing materials was the way to go.





9-11 Bits and pieces while clearing site of an illegal dump site.
12 Stumps and ferns from sites cleared for developments.

PAST LIVES vs **NEW LIVES**





Penang State Government (KNPP)

1. Draft Penang Hill Special Area Plan (Substitution)



- <http://jpbd.penang.gov.my/index.php/ms/>



Penang City Council (MBPP)

1. Guidelines on Early Commencement of Work (circulated on 05.09.2020.)
2. Guidelines on Temporary Roof Structures for Parking Bays
3. Use & Placement of Ro-Ro Bins on Construction Sites
4. MBPP: Adherence to Conditional Movement Control Order following increased Covid-19 infection rates



Seberang Perai City Council (MBSP)

1. Economic Stimulus Incentives (Post-Covid-19): Early Commencement of Works Prior to Building Plan Approval for Areas under MBSP Jurisdiction (circulated on 01.10.2020.)
2. Execution of Penang Home Ownership Campaign (HOC) 2020 & Penang State Real Estate Sector Stimulus Policy 2020 for MBPP & MBSP (circulated on 13.10.2020.)



Construction Industry Development Board (CIDB)

1. Meeting on Development of National BIM e-Submission System (NBES) and Integration with One-Stop Centre 3 Plus Online (OSC 3 Plus Online) on 22.09.2020 @ PAMNC Office



Pertubuhan Akitek Malaysia (PAM)

1. Contract Administration in Relation to Covid-19 Act 2020

http://www.pam.org.my/images/resources/practice_notes/PN3_2020_Covid19-Act.pdf

2. Temporary Measures for Reducing the Impact of Coronavirus Disease 2019 (Covid-19) Act 2020

http://www.federalgazette.agc.gov.my/outputaktap/20201023_829_BI_Act%20829.pdf

The above guidelines are available on PAM Northern Chapter's website:

<http://www.architecturemalaysia.com/>

EVENTS



World Architecture Day (WAD)

"Architecture ... Housing For All"

Speakers WAD19: Mr. Albert Mo, Ar. Eleena Jamil, Mr. Sasaki Katsutoshi, Ms. Anne-Cecile Comar and Mr. Paul Daniel Arsene

October 2019

Housing affordability is a major issue plaguing young households in Malaysia. In line with the chosen theme "**Architecture...Housing for All**", PAM Northern Chapter had invited renowned speakers from around the globe to share their perspectives and discuss ways to provide affordable housing for all.

A WAD 2019-exclusive mini-documentary featured Penang's pioneering low-cost high-rise flats constructed by the state government using then-novel prefabricated technology. Half a century later, the Rifle Range Flats still stand strong as a lively and vibrant example of living heritage with stories worth telling. The documentary shares insights from long-time residents who have called the flats home for most of their lives. The lessons behind these anecdotes may serve as food for thought and points of consideration for all architects and designers regarding housing design.



Watch Documentary Video :
[Rifle Range Flats](#)

EVENTS

“Mindful of the Body and Soul: Sustainable Management Driven Strata Development Design”

by Chris Tan Chur Pim

August 2020



The seminar focused on continual improvement in strata property development which brought forth a more refined policy with a diverse range in strata components, purposes and usages as well as multiple phases of delivery in different timing.

GBI Incentives & Roof U-Value Calculation For Reflective Insulation

by Baylon Tham Wai Leong

November 2020



In line with the gazetted UBBL 38A by Penang State Government on energy efficiency in buildings, the seminar revolves around the correct insulation methods and roof U-value calculations particularly on the reflective insulation topic.

EVENTS



A Date with Mayor MBPP and PAM Northern Chapter

To Transform Penang Island into a Low Carbon Compact City for People to Live, Learn, Work and Play
October 2020

MBPP successfully conducted an engagement session with a group of architects through “A Date with **Mayor** and PAM NC” programme, in a bid to increase professionals involvement in town planning.

Dato' Ar. Yew Tung Seang, the mayor of MBPP, chaired the green initiatives session championed by MBPP.

The local council heard opinions from members of PAM NC who contributed their views and ideas to propel Penang towards low-carbon city status.





KEEP WATCHING THIS SPACE. TAKE CARE AND STAY SAFE

EDITORIAL TEAM

Ar. Leow Kwong Choon
Ar. TPr. Lee Siew Ang
Adeline Chan
Alice Gan
Ar. Aw Hooi Fang
Ar. Daniel Chong
Irene Aw Siew Bee
Khaw Su Chee
Lee Min Zhao
Ar. Lim Tze Ling
Ar. Loh Mei Ee
Maryam Hanin Yahya
Mohamad Hazwan
Muhammad Nur Al Amin
Ar. Nina Lee
Ar. Ng Tzer Ying
Nabihah Zainol Abidin
Noor Afandi
Ar. Ooi Sze Meng
Ar. Ooi Sze Jeat
Thor Yi Chun

STAY UPDATED
ON OUR SOCIAL MEDIA



PARTING SHOTS

"As an architect you **design for the present**, with an awareness of the past, for a future which is **essentially unknown.**"

-Norman Foster-



"One of the great beauties of architecture is that each time, it is like **life starting all over again.**"

-Renzo Piano-

"To provide meaningful architecture **is not to parody history, but to articulate it.**"

-Daniel Libeskind-

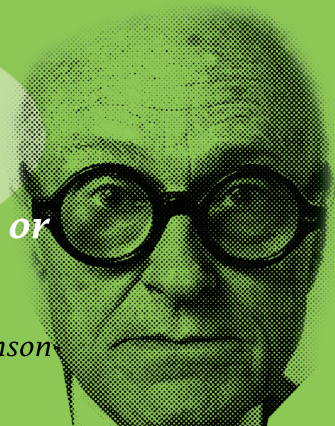


"Architecture should speak of its time and place, but **yearn for timelessness.**"

-Frank Gehry-

"All architecture is shelter, all great architecture is the **design of space that contains, cuddles, exalts, or stimulates the persons in that space.**"

-Philip Johnson-



Published by:

PAM Northern Chapter

No. 3, Lorong Amoy, 10050

George Town, Penang

Tel: 04-227 2207

For editorial matters, advertising enquiries or subscription matters, please e-mail us at:

pamnc.arc@gmail.com

www.architecturemalaysia.com

FREE DIGITAL COPY FOR PAM MEMBERS ONLY